

## Centralized research material sourcing makes discovery faster

Offer your researchers a single, direct point of access to all of the commercial and proprietary chemicals, reagents and lab supplies needed for their research projects. When ERM, part of the SciQuest Materials Management product set, is combined with SciQuest's Spend Director and integrated with your core purchasing / financial applications, it delivers a fully automated workflow for requisitioning, approving, receiving, and reconciling research materials. ERM's modular design supports the management of storeroom, stock room, and lab inventories as well as monitoring and reporting for Health and Safety. It provides ultimate flexibility in configuring a solution to your organization's needs.

## Your researchers benefit

Your researchers save time and money acquiring materials they need by simultaneously searching:

- Proprietary and commercially available structure databases to identify all structures of interest
- Inventories of centrally managed or local storerooms of specialty chemicals and materials
- Inventories of proprietary compounds or other localized inventories maintained in legacy databases
- Ecatalogs including vendor catalogs, MDL's CPI, or SciQuest's own Spend Director hosted catalogs, which provide contract pricing and preferred supplier rankings
- Accurate inventories of containers located in labs
- Stock rooms of bulk chemicals and lab supplies

By uniting these information resources in one search interface, ERM streamlines sourcing decisions and reduces excess inventories, sourcing delays and disposal costs.

### MAXIMIZE CHEMICAL INVENTORY, MINIMIZE RISK

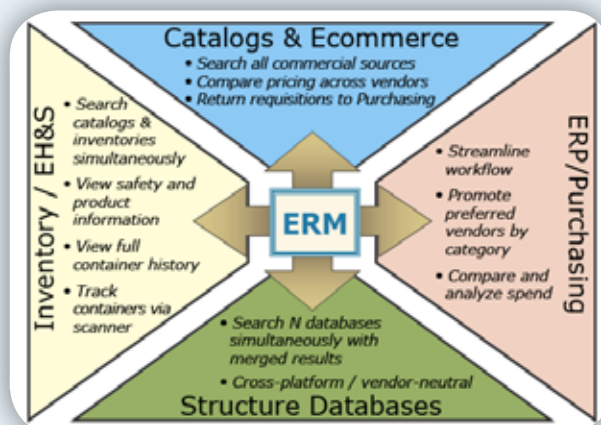
- Improve researcher productivity with advanced searching tools, including an interactive structure search.
- Reduce inventory overstock, and purchase and disposal costs with improved sourcing and insight into current chemical inventory.
- Access reliable inventory information by enabling accurate container tracking.
- Maintain accurate safety data and increase EH&S compliance with extensive hazardous materials monitoring.

**sciQuest**™ EMPOWERING. STRATEGIC. PROCUREMENT.

## A fully-integrated workflow

Enhance the value of your existing ERP and purchasing investments with ERM by filling key gaps for research procurement, while supporting your policies and workflows.

- Researchers punch-out to ERM from your eprocurement environment, identify both available containers and those to be purchased, then return requisitioned items to their shopping cart.
- ERP or purchasing systems return PO numbers for ordered items to ERM and update status.
- Central receiving staff use PO numbers on shipping paperwork to receive containers into ERM. Integration means only the number of containers received must be entered, reducing data entry and errors.
- ERM updates the ERP / financial system with containers received against the PO, eliminating the need for separate reconciliation data entry.



ERM is the only complete solution that integrates critical information sources to reduce costs and speed research

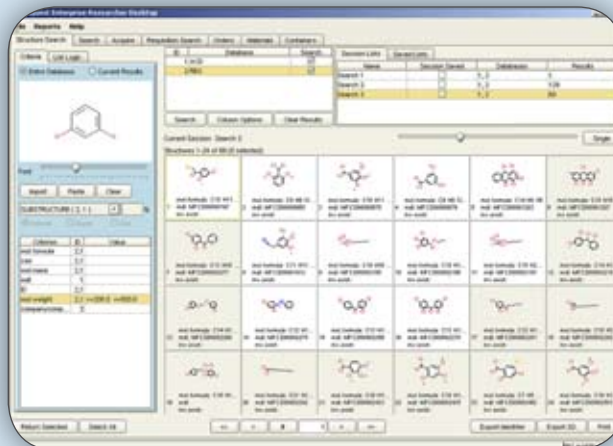


## Powerful and flexible structure search

Chemists simultaneously search multiple structure databases (For example, ACD and a proprietary database). Matching results from different sources are merged to streamline review. Search history is tracked within a session, and users may return to or save prior search results.

Variable structure view, easy list manipulation, available inventory indicators, and support for vendor-specific matching criteria combine for a powerful yet easy-to-use search tool.

When implementing, you and your IT team select the structure search technology based on your needs. ERM easily accommodates your selection because it works with vendor-neutral chemistry data cartridge technology.



Concurrently search structure databases from different vendors and return all results for sourcing.

## A full-featured health & safety solution

Your organization's health and safety officials better manage risks associated with research materials, and more easily maintain a safe and compliant workplace. Through ERM, users have easy access to product data as well as safety and handling information. Data includes R&S phrases and a selected source for electronic Material Safety Data Sheets (MSDS).

The solution allows your requisition approvals to be performed in ERM or integrated with your purchasing workflow. Listed materials may be flagged for review and/or approval prior to purchase, and all movements of listed materials may be tracked and reported. EH&S can also establish "control zones" with quantity limits for listed materials.

## An investment in strategic procurement and materials management technology

ERM supports both networked and radio-frequency (RF) scanners with the streamlined transactions crucial for maintaining accurate lab inventories.

ERM provides robust, Web-based inventory management tools, minimizing the costs and efforts associated with maintenance and support. In addition, any inventory database, inside or outside of your firewall, can be accessible to researchers for searching and/or requesting.

If you need a configurable solution, ERM offers the optimal combination of proven configurability and customer response with rapid deployment and low total cost of ownership.

.....  
**SciQuest, Inc.**

www.sciquest.com  
Telephone: 919 659 2100  
Fax: 919 659 2199

Toll-free: 877 710 0413  
UK and EU: +44 1794 341182  
Germany and EU: +49 228 76769084

To learn how SciQuest can help your organization's procurement efforts visit: [www.sciquest.com](http://www.sciquest.com) and download SciQuest's Online Benefit Calculator to get a precise view of how much your organization could save. Schedule a free call with a SciQuest solutions expert for a one-on-one value assessment or sign up for a free online seminar at [www.sciquest.com/resource-center/webinars](http://www.sciquest.com/resource-center/webinars).